

A woman with long, wavy brown hair is shown from the chest up, wearing a white blazer. She is wearing a necklace with a wooden and black pendant. The background is a light blue-grey color.

ART JEWELLERY

OKOR

EST. 2017.

CREATED BY THE IDEAS  
OF OUR OWN LIFESTYLE

COMBINING TECHNIQUES OF VARIOUS MATERIALS

THE IDEA WAS TO MAKE PARTS OF NATURE ALIVE  
...SO THE STORY WOULD DRIVE US

AND TAKE TO PLACES WE HAVE NEVER BEEN BEFORE

INTO A NEW ADVENTURE

Our Brand

*About*



A close-up, profile shot of a woman with dark hair and eyes closed. She is wearing a large, modern earring that consists of a small silver-colored hook, a small clear crystal, a rectangular piece of light-colored wood, and a long, white, tapered cone hanging from it. The background is a soft, out-of-focus blue. The entire image is framed by a wide, solid olive-green border.

# Our Vision

to make unique jewellery inspired by our natural surroundings like turquoise  
seasides and beautiful centuries old olive groves





CARBON FIBER SERIES

# Our Products

WALL CLOCKS    HOME DECOR

*C SERIES*

K SERIES

*E SERIES*

*DIAMOND SERIES*

R SERIES

CONCRETE SERIES

*RINGS*

CUSTOM SERIES



**C SERIES**  
comon shaped

**R SERIES**  
rectangle shaped





## DIAMOND SERIES

diamond cut  
shaped





## RINGS

diamond cut  
shaped



## DIAMOND SERIES

diamond cut  
shaped



## K SERIES

konus shaped



## R SERIES

rectangle shaped



OK'OR  
ART JEWELLERY

## **XL E SERIES**

konus shaped





# Earrings

## Doublesided

—  
*Suitable for everyday wear, to go to the office or for a hangout with friends. Change sides depending on your mood.*





# CONCRETE SERIES

special concrete  
formula with the  
best olive wood  
parts







# Earrings Standard

---

*Made of centuries  
old olive wood  
hand crafted till perfection*

**BESPOKE**  
**JEWELLERY**







OKÓR  
TIME OF ART





OKOR  
SPECIALIZED

OKOR  
SPECIALIZED



OKÖR  
SPECIALIZED





The image features two large, semi-circular wall clocks made of wood and concrete. The clock on the left has a light-colored wood face and a grey concrete back. The clock on the right has a dark wood face and a black concrete back. Both clocks have black hands and a gold-colored center. A small, square, light-colored box is visible in the top center. The background is a plain, light-colored surface.

OKOR  
SPECIALIZED

*wood & concrete*







OKOR  
SPECIALIZED





OKOR  
SPECIALIZED



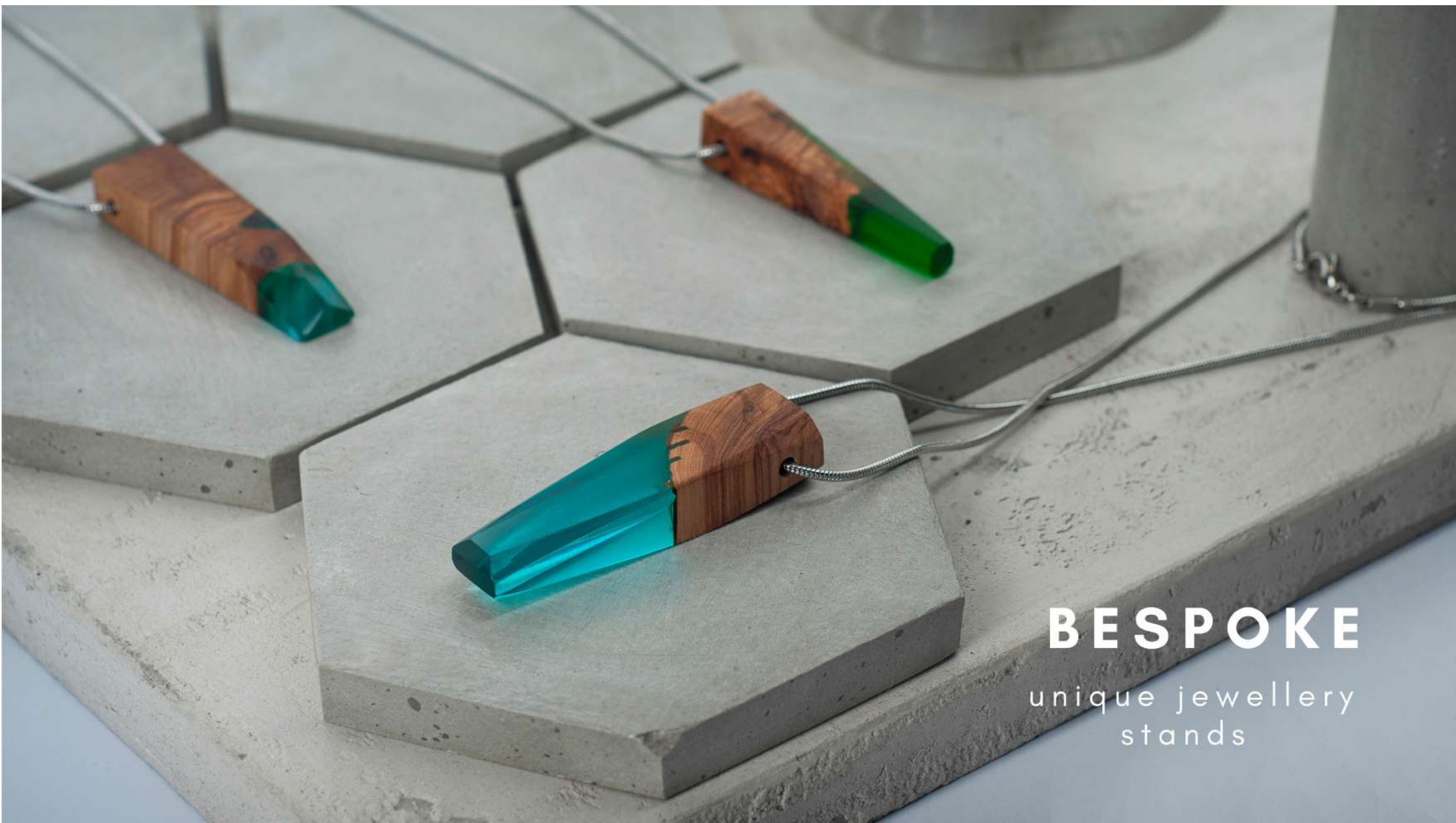
OKOR  
SPECIALIZED



A woman with long, dark, wavy hair is shown in profile, looking down. She is wearing a white blazer over a dark top. A necklace with a large, rectangular, light blue and white pendant is visible. A small, matching earring is also visible. The background is a solid light blue.

# *Sparkling* Long neckless

—  
*Party jewellery designed  
for special events,  
worn by a special lady  
like yourself.*



**BESPOKE**

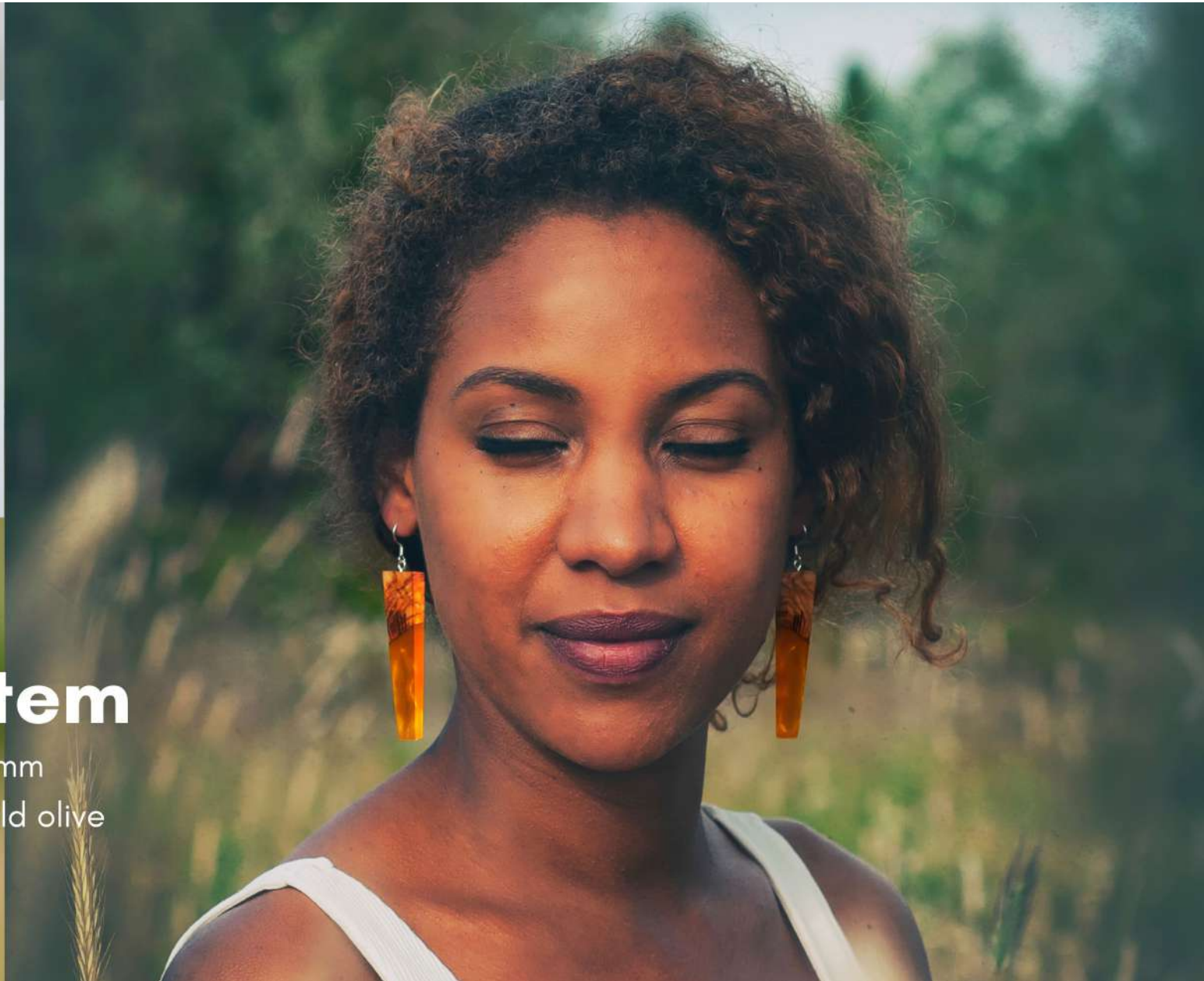
unique jewellery  
stands

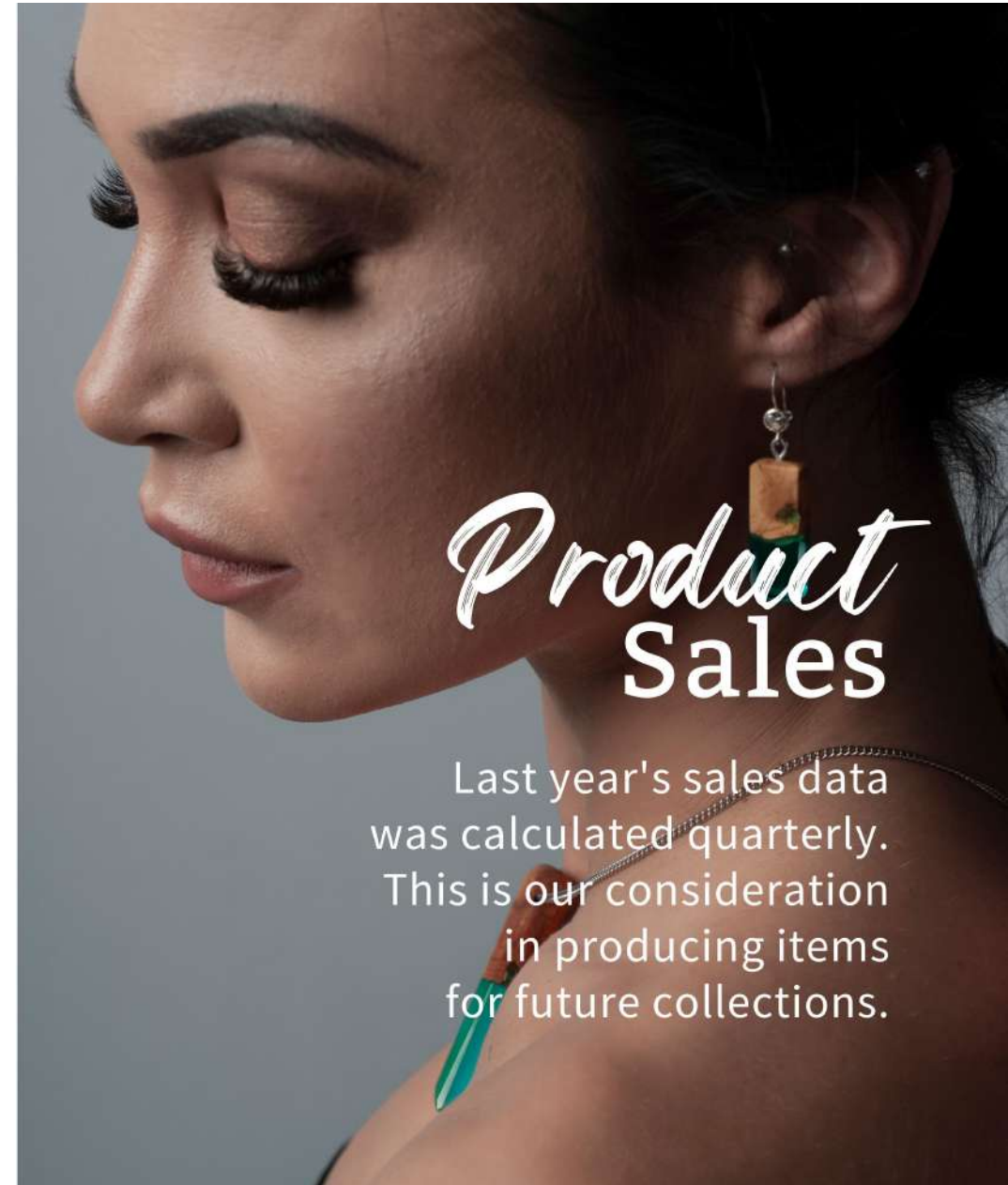
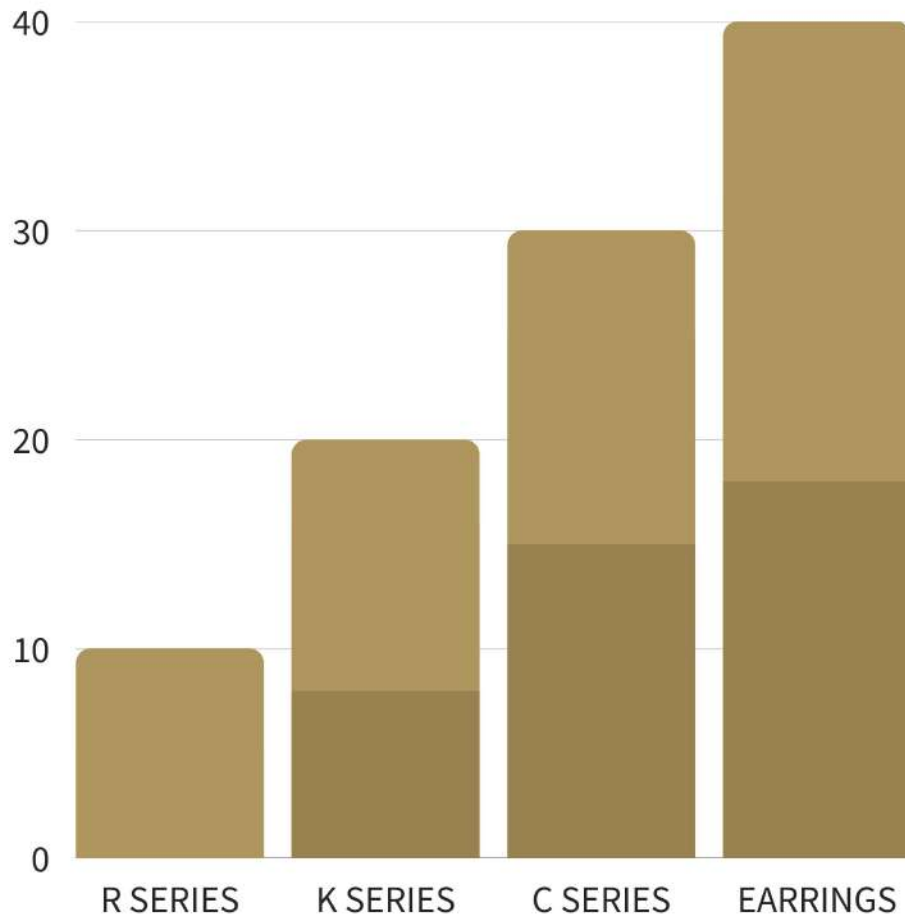




## Best selling item

XL EARRINGS - konus shape/4-5mm  
thick/6gr.weight/100-200years old olive  
wood used





# Product Sales

Last year's sales data was calculated quarterly. This is our consideration in producing items for future collections.

# Our Team

Dragan  
Blazic

—  
*Director*



Andrija  
Groseta

—  
*Designer*



WWW.  
okorart  
.com

ART JEWELLERY

OKOR

EST. 2017.

---

insta  
gram.  
okorart  
jewelle  
ry

ONE OF A KIND

Like the person who wears it.

